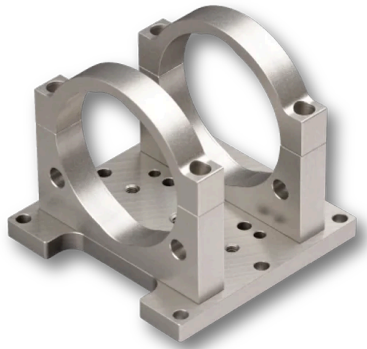


SK5105-2L

Mounting system for extension rings type ZR-L



FEATURES

For camera configurations with tube length > 55 mm using extensions rings [ZR-L](#)

TECHNICAL DATA

SK5105-2L

Extension ring	ZR-L series
Mounting diameter	47.5 mm
Distance extension ring center axis to base	36.0 mm

RELATED PRODUCTS

EXTENSION RING TYPE for M45x0.75
ZR-L

MOUNTING for Line Scan Cameras
ACCESSORIES

This is a printout of the page <https://sukhamburg.com/products/details/SK5105-2L> from 5/2/2024

CONTACT

For more information please contact:

Schäfter + Kirchhoff GmbH

Kieler Str. 212

22525 Hamburg

Germany

Tel: +49 40 85 39 97-0

Fax: +49 40 85 39 97-79

info@sukhamburg.de

www.sukhamburg.com

LEGAL NOTICE

Copyright 2020 Schäfter+Kirchhoff GmbH. All rights reserved.

Text, image, graphic, sound, video and animation files and their arrangement on Schäfter+Kirchhoff GmbH webpages are protected by copyright and other protective laws. The content may not be copied for commercial use or reproduced, modified or used on other websites. [\[more\]](#)