

## 48PM-S-D-C

Polarizing beam splitting cube, in adjustment mount, decentered



### FEATURES

The polarization beam splitting cube 48PM-S-D-C is used for polarization cleaning purposes in combination with PM fiber couplings. Only light with the correct polarization direction is transmitted. It has a decentered system mount Ø 19.5 mm and is used in combination with dichroic beam combiners [48BC-CC](#) or with beam splitting plates [48BS-CC](#). It has an adjustable mount and is designed to be integrated into the [multicube](#) system.

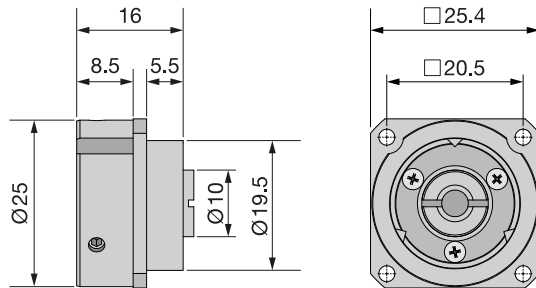
- Polarizing beam splitting cube
- Wavelength range 1100 - 1700 nm
- Extinction ratio 10,000 : 1
- Clear aperture 3.5 mm
- Broadband AR coating
- In adjustable mount
- System mount Ø 19.5 mm
- Decentered 0.3 mm

## TECHNICAL DATA

48PM-S-D-C

Order code	48PM-S-D-C
Type	Polarizing beam splitting cube
Wavelength range	1100 - 1700 nm
Extinction Ratio	10,000 : 1
AR Coating	1100 - 1700 nm
Clear aperture	3.5 mm
Decentered	0.3 mm
Rotation range	360°

Connection	Flange mount
System mount	Ø 19.5 mm
Housing material	black anodized aluminum
Weight	
Dimensions (for a complete dimensional drawing please refer to the downloads section)	



## DOWNLOADS



[980120266201.pdf \(Dimensional drawing\)](#)

This is a printout of the page <https://sukhamburg.com/products/details/48PM-S-D-C> from 5/8/2024

## CONTACT

For more information please contact:

Schäfter + Kirchhoff GmbH

Kieler Str. 212

22525 Hamburg

Germany

Tel: +49 40 85 39 97-0

Fax: +49 40 85 39 97-79

[info@sukhamburg.de](mailto:info@sukhamburg.de)

[www.sukhamburg.com](http://www.sukhamburg.com)

## LEGAL NOTICE

**Copyright 2020 Schäfter+Kirchhoff GmbH. All rights reserved.**

Text, image, graphic, sound, video and animation files and their arrangement on Schäfter+Kirchhoff GmbH webpages are protected by copyright and other protective laws. The content may not be copied for commercial use or reproduced, modified or used on other websites. [\[more\]](#)