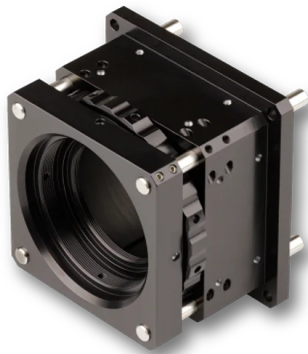


FA26-S45

Focus adapter from M72x0.75 to M45x0.75



FEATURES

High precision focus adapter from Ø 71.25 mm to M45x0.75 with adjustable length from 41 to 71 mm

Appropriate for Large Format Line Scan Cameras (...-XL/-XB/-XC) with sensor length > 45 mm.

The stable linear tracking rods provide a precise focusing mechanism that can be locked firmly in the final position.

TECHNICAL DATA

FA26-S45

Mounting/camera side	Ø 71.25 mm
Mounting/lens side	M45x0.75
Length	41 to 70 mm

ACCESSORIES

EXTENSION RING TYPE ZR-L	for M45x0.75
AC46-M45	Lens adapter from M45x0.75 to V46-Mount
M39-45	Lens adapter from M45x0.75 to M39x1/26" (Leica)

This is a printout of the page <https://sukhamburg.com/products/details/FA26-S45> from 4/19/2024

CONTACT

For more information please contact:

Schäfter + Kirchhoff GmbH

Kieler Str. 212

22525 Hamburg

Germany

Tel: +49 40 85 39 97-0

Fax: +49 40 85 39 97-79

info@sukhamburg.de

www.sukhamburg.com

LEGAL NOTICE

Copyright 2020 Schäfter+Kirchhoff GmbH. All rights reserved.

Text, image, graphic, sound, video and animation files and their arrangement on Schäfter+Kirchhoff GmbH webpages are protected by copyright and other protective laws. The content may not be copied for commercial use or reproduced, modified or used on other websites. [\[more\]](#)