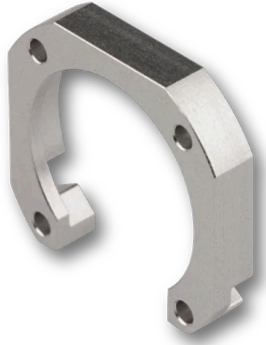


## CC-25-4

Clamp Collar for fiber collimators with diameter Ø 25/28 mm



### FEATURES

Clamp Collar for fiber collimators series [60FC-L](#) with diameter Ø 25/28 mm and focal length f' 20 - 60 mm. Suitable for integration into the multicube system

## DOWNLOADS



[951211980100.pdf \(Dimensional drawing\)](#).

## ACCESSORIES

### 48MC-MP-25

Mounting plate for the Schäfter+Kirchhoff multicube™ system

## RELATED PRODUCTS

### CLAMP COLLARS SERIES CC

for all collimators with flange, different sizes

### FIBER COLLIMATORS SINGLE-MODE/PM

Fiber Collimators for collimating light exiting a single-mode or polarization-maintaining fiber cable

This is a printout of the page <https://sukhamburg.com/products/details/CC-25-4> from 5/6/2024

## CONTACT

For more information please contact:

**Schäfter + Kirchhoff GmbH**

**Kieler Str. 212**

**22525 Hamburg**

**Germany**

**Tel: +49 40 85 39 97-0**

**Fax: +49 40 85 39 97-79**

**[info@sukhamburg.de](mailto:info@sukhamburg.de)**

**[www.sukhamburg.com](http://www.sukhamburg.com)**

## LEGAL NOTICE

**Copyright 2020 Schäfter+Kirchhoff GmbH. All rights reserved.**

Text, image, graphic, sound, video and animation files and their arrangement on Schäfter+Kirchhoff GmbH webpages are protected by copyright and other protective laws. The content may not be copied for commercial use or reproduced, modified or used on other websites. [\[more\]](#)