

## C-Mount-19.5AC

Adapter system mount Ø 19.5 mm to external C-mount thread



### FEATURES

The adapter C-Mount-AC19.5 is an adapter from system mount Ø 19.5 mm to an external C-mount thread. With this adapter you can attach e.g. C-mount cameras to the [multicube](#) system

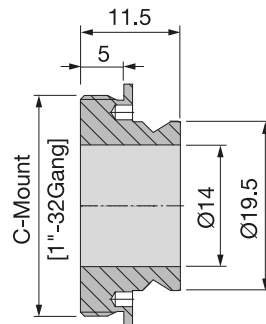
- System mount Ø 19.5 mm
- C-mount, external
- Clear aperture Ø 14 mm
- Black anodized aluminum

## TECHNICAL DATA

C-Mount-19.5AC

Order Code		C-Mount-19.5AC
Adapter	System mount	External thread
	Ø 19.5 mm	C-Mount
	Steel ring	
Clear aperture	Ø 14 mm	
Material	Black anodized aluminum / steel	
Weight	8 g	

Dimensions (for a complete dimensional drawing please refer to the downloads section)



## RELATED PRODUCTS

### ATTACHMENT OPTICS SERIES 13

to attach in the front of collimators with system mount  
Ø19.5 mm

### ADAPTERS FOR SYSTEM MOUNT Ø 19.5MM

for incorporation into the multicube™ system

### ADAPTERS FOR FIBER OPTICS

Adapters to use with fiber collimators and with the  
multicube™ system.

This is a printout of the page [https://sukhamburg.com/products/details/C-Mount-19\\_5AC](https://sukhamburg.com/products/details/C-Mount-19_5AC) from 5/1/2024

## CONTACT

For more information please contact:

Schäfter + Kirchhoff GmbH  
Kieler Str. 212  
22525 Hamburg  
Germany  
Tel: +49 40 85 39 97-0  
Fax: +49 40 85 39 97-79

info@sukhamburg.de  
www.sukhamburg.com

## LEGAL NOTICE

**Copyright 2020 Schäfter+Kirchhoff GmbH. All rights reserved.**

Text, image, graphic, sound, video and animation files and their arrangement on Schäfter+Kirchhoff GmbH webpages are protected by copyright and other protective laws. The content may not be copied for commercial use or reproduced, modified or used on other websites. [\[more\]](#)