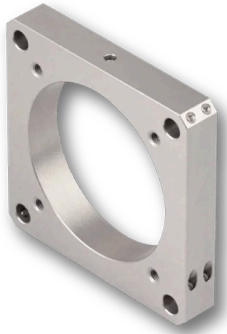


68MC-MP-55

Mounting plate for Ø 55 mm.



FEATURES

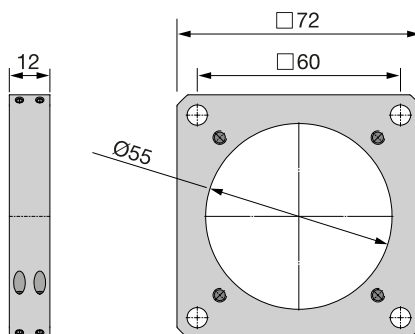
This mounting plates allows to hold fiber collimators with Ø 55 mm diameter and can be adapted to the Schäfter+Kirchhoff multicube™ system and the 30 mm cage system. It can be used with established* 60 mm cage systems directly.

*Schäfter+Kirchhoff has a high demand for quality and accuracy. The tight tolerances associated with this can in individual cases lead to discrepancies with the imperial dimensions of some cage systems. Please contact us if problems occur.

TECHNICAL DATA

68MC-MP-55

Dimensions (for a complete dimensional drawing please refer to the downloads section)



TECHNOTES

- [Multicube Compatability](#)
[Compatability to other cage systems](#)

FAQ

Compatability of the multicube system

Is my system compatible to established 30 mm cage systems or microbench systems?

The multicube components of series 48 have a rod hole distance of 30 mm. You can attach systems based on those components easily to a 30 mm cage systems or microbench system. More informaion can be found [here](#).

If you are working with a system based on series 68, there are adapters available, so that they can be used with 30 mm cage systems as well.

Is my system compatible to established 60 mm cage systems?

The multicube components of series 68 have a rod hole distance of 60 mm. You can attach systems based on those components easily to a 60 mm cage systems or microbench system. More informaion can be found [here](#).

If you are working with a system based on series 48, there are adapters available, so that they can be used with 60 mm cage systems as well.

DOWNLOADS



[980241900100.pdf \(Dimensional drawing\)](#)

ACCESSORIES

CC-55

Clamp Collar for fiber collimators with diameter Ø Ø
55/59 mm

RELATED PRODUCTS

MULTICUBE
COMPONENTS

Multicube Components like mounting plates, cubes
etc.

This is a printout of the page <https://sukhamburg.com/products/details/68MC-MP-55> from 5/5/2024

CONTACT

For more information please contact:

Schäfter + Kirchhoff GmbH

Kieler Str. 212

22525 Hamburg

Germany

Tel: +49 40 85 39 97-0

Fax: +49 40 85 39 97-79

info@sukhamburg.de

www.sukhamburg.com

LEGAL NOTICE

Copyright 2020 Schäfter+Kirchhoff GmbH. All rights reserved.

Text, image, graphic, sound, video and animation files and their arrangement on Schäfter+Kirchhoff GmbH webpages are protected by copyright and other protective laws. The content may not be copied for commercial use or reproduced, modified or used on other websites. [\[more\]](#)