

60A19.5-F-FB

Adapter for 60SMS Laser Beam Couplers Flange mount for the fiber bench system



FEATURES

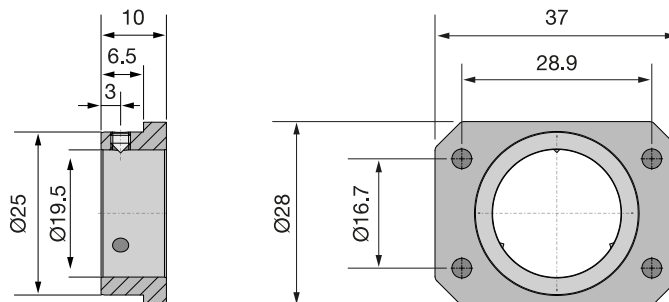
Adapter for flange mount of the [60SMS](#) Laser Beam Couplers to the fiber bench system

- System mount Ø 19.5 mm
- Flange mount 28.9 x 16.7 mm

TECHNICAL DATA

60A19.5-F-FB

Dimensions (for a complete dimensional drawing please refer to the downloads section)



DOWNLOADS



[930730070600.pdf \(Dimensional drawing\)](#)

ACCESSORIES

50HD-15

Hex key WS 1.5

RELATED PRODUCTS

**ADAPTERS FOR 60SMS,
60SMF, AND 60FC-A19.5**

with system mount Ø 19.5 mm

**LASER BEAM
COUPLERS SERIES
60SMS**

for coupling into single-mode and polarization-
maintaining fiber cables

This is a printout of the page https://sukhamburg.com/products/details/60A19_5-F-FB from 5/8/2024

CONTACT

For more information please contact:

Schäfter + Kirchhoff GmbH

Kieler Str. 212

22525 Hamburg

Germany

Tel: +49 40 85 39 97-0

Fax: +49 40 85 39 97-79

info@sukhamburg.de

www.sukhamburg.com

LEGAL NOTICE

Copyright 2020 Schäfter+Kirchhoff GmbH. All rights reserved.

Text, image, graphic, sound, video and animation files and their arrangement on Schäfter+Kirchhoff GmbH webpages are protected by copyright and other protective laws. The content may not be copied for commercial use or reproduced, modified or used on other websites. [\[more\]](#)