

60A19.5-F

Adapter for 60SMS Laser Beam Couplers Flange mount 1"x1"

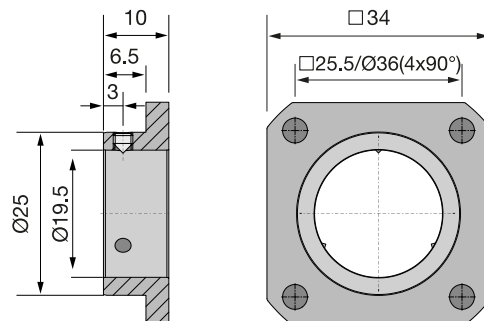


FEATURES

Adapter for flange mount of the [60SMS](#) Laser Beam Couplers to laser systems with a standard drilling pattern 1"x1"

- System mount Ø 19.5 mm
- Flange mount 1"x1"

DESCRIPTION



DOWNLOADS



[930730070300.pdf \(Dimensional drawing\).](#)

ACCESSORIES

| | |
|--------------|--|
| 50HD-15 | Hex key WS 1.5 |
| 60A19.5-F-MS | Mounting set for type 60A19.5 adapters |

RELATED PRODUCTS

| | |
|--|---|
| ADAPTERS FOR 60SMS, 60SMF, AND 60FC-A19.5 | with system mount Ø 19.5 mm |
| LASER BEAM COUPLERS SERIES 60SMS | for coupling into single-mode and polarization- maintaining fiber cables |

This is a printout of the page https://sukhamburg.com/products/details/60A19_5-F from 5/5/2024

CONTACT

For more information please contact:

Schäfter + Kirchhoff GmbH

Kieler Str. 212

22525 Hamburg

Germany

Tel: +49 40 85 39 97-0

Fax: +49 40 85 39 97-79

info@sukhamburg.de

www.sukhamburg.com

LEGAL NOTICE

Copyright 2020 Schäfter+Kirchhoff GmbH. All rights reserved.

Text, image, graphic, sound, video and animation files and their arrangement on Schäfter+Kirchhoff GmbH webpages are protected by copyright and other protective laws. The content may not be copied for commercial use or reproduced, modified or used on other websites. [\[more\]](#)