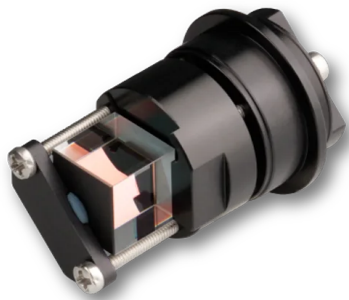


## Polarization Beam Splitter 48PM-CC-B

Beam splitting cube, polarization dependent, in adjustment mount



### FEATURES

The polarization beam splitter 48PM-CC-B is a polarization dependent cube beam splitters. It has an adjustable mount and is designed to be integrated into the [multicube](#) system.

- Beam splitting cube
- Polarization depending
- Wavelength range 750 -1100 nm
- Extinction ratio up to 10,000 : 1
- Clear aperture up to 7 mm
- Reflection angle 90°
- Broadband AR coating
- In adjustable mount
- Shipped with clamp collar

## TECHNICAL DATA

Polarization Beam Splitter 48PM-CC-B

Order code	48PM-CC-B
Type	Polarization beam splitter
Wavelength range	750 - 1100 nm
Extinction Ratio	10,000 : 1
AR Coating	750 - 1100 nm
Clear aperture	7 mm
Reflection angle	90°
Rotation range	360°
Tilt range	± 1.5°
Housing material	black anodized aluminum

Weight

21 g

## DOWNLOADS

[980120190200.pdf \(Dimensional drawing\)](#)

This is a printout of the page <https://sukhamburg.com/products/details/48PM-CC-B> from 5/2/2024

### CONTACT

For more information please contact:

Schäfter + Kirchhoff GmbH

Kieler Str. 212

22525 Hamburg

Germany

Tel: +49 40 85 39 97-0

Fax: +49 40 85 39 97-79

[info@sukhamburg.de](mailto:info@sukhamburg.de)

[www.sukhamburg.com](http://www.sukhamburg.com)

## LEGAL NOTICE

**Copyright 2020 Schäfter+Kirchhoff GmbH. All rights reserved.**

Text, image, graphic, sound, video and animation files and their arrangement on Schäfter+Kirchhoff GmbH webpages are protected by copyright and other protective laws. The content may not be copied for commercial use or reproduced, modified or used on other websites. [\[more\]](#)