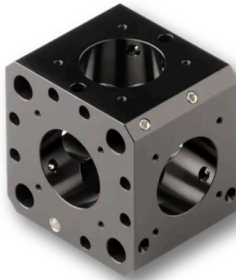


## 48MC-SM-19.5

Mounting cube for the Schäfter+Kirchhoff multicube™ system



### FEATURES

Mounting cube for the Schäfter+Kirchhoff multicube™ system.

For integration of components with Ø 19.5 mm system mount such as [60SMS](#) Laser Beam Couplers.

Single cube with through-holes for linear arrangements, short design

## TECHNICAL DATA

48MC-SM-19.5

Order Code	48MC-SM-19.5
Type	Single cube for linear configuration
Dimensions	42 x 42 x 34 mm
Fitting bore	Ø 19.5 mm
Material	Black anodized aluminum
Weight	78 g
RoHS compliant	Yes

## TECHNOTES

- [Multicube Compatability](#)  
[Compatability to other cage systems](#)

## FAQ

### Compatibility of the multicube system

#### Is my system compatible to established 30 mm cage systems or microbench systems?

The multicube components of series 48 have a rod hole distance of 30 mm. You can attach systems based on those components easily to a 30 mm cage systems or microbench system. More informaion can be found [here](#).

If you are working with a system based on series 68, there are adapters available, so that they can be used with 30 mm cage systems as well.

#### Is my system compatible to established 60 mm cage systems?

The multicube components of series 68 have a rod hole distance of 60 mm. You can attach systems based on those components easily to a 60 mm cage systems or microbench system. More informaion can be found [here](#).

If you are working with a system based on series 48, there are adapters available, so that they can be used with 60 mm cage systems as well.

## DOWNLOADS

## RELATED PRODUCTS

### 48MC COMBINATION CUBES

Base unit for multicube™ system. Compatible with established cage and microbech systems.

### MULTICUBE COMPONENTS

Multicube Components like mounting plates, cubes etc.

This is a printout of the page [https://sukhamburg.com/products/details/48MC-SM-19\\_5](https://sukhamburg.com/products/details/48MC-SM-19_5) from 5/7/2024

## CONTACT

For more information please contact:

**Schäfter + Kirchhoff GmbH**

**Kieler Str. 212**

**22525 Hamburg**

**Germany**

**Tel: +49 40 85 39 97-0**

**Fax: +49 40 85 39 97-79**

**[info@sukhamburg.de](mailto:info@sukhamburg.de)**

**[www.sukhamburg.com](http://www.sukhamburg.com)**

## LEGAL NOTICE

**Copyright 2020 Schäfter+Kirchhoff GmbH. All rights reserved.**

Text, image, graphic, sound, video and animation files and their arrangement on Schäfter+Kirchhoff GmbH webpages are protected by copyright and other protective laws. The content may not be copied for commercial use or reproduced, modified or used on other websites. [\[more\]](#)