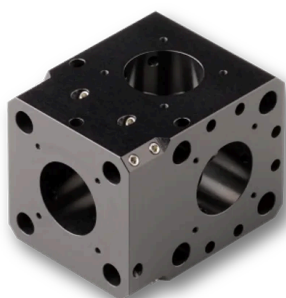


## 48MC-LTS-19.5

Mounting cube for the Schäfter+Kirchhoff multicube™ system



### FEATURES

Mounting cube for the Schäfter+Kirchhoff multicube™ system.  
For integration of components with Ø 19.5 mm system mount\* such as [60SMS](#) Laser Beam Couplers.  
Single T-cube for T-arrangements.

## DESCRIPTION

## TECHNICAL DATA

48MC-LTS-19.5

Order Code	48MC-LTS-19.5
Type	Single cube for 'T' configuration
Dimensions	42 x 42 x 54 mm
Fitting bore	Ø 19.5 mm
Material	Black anodized aluminum
Weight	147 g

## TECHNOTES

[Multicube Compatability](#)  
[Compatability to other cage systems](#)

## FAQ

### Compatability of the multicube system

#### **Is my system compatible to established 30 mm cage systems or microbench systems?**

The multicube components of series 48 have a rod hole distance of 30 mm. You can attach systems based on those components easily to a 30 mm cage systems or microbench system. More informaion can be found [here](#).

If you are working with a system based on series 68, there are adapters available, so that they can be used with 30 mm cage systems as well.

#### **Is my system compatible to established 60 mm cage systems?**

The multicube components of series 68 have a rod hole distance of 60 mm. You can attach systems based on those components easily to a 60 mm cage systems or microbench system. More informaion can be found [here](#).

If you are working with a system based on series 48, there are adapters available, so that they can be used with 60 mm cage systems as well.

## DOWNLOADS

## RELATED PRODUCTS

### **48MC COMBINATION CUBES**

Base unit for multicube™ system. Compatible with established cage and microbech systems.

### **MULTICUBE COMPONENTS**

Multicube Components like mounting plates, cubes etc.

This is a printout of the page [https://sukhamburg.com/products/details/48MC-LTS-19\\_5](https://sukhamburg.com/products/details/48MC-LTS-19_5) from 5/6/2024

## CONTACT

For more information please contact:

**Schäfter + Kirchhoff GmbH**

**Kieler Str. 212**

**22525 Hamburg**

**Germany**

**Tel: +49 40 85 39 97-0**

**Fax: +49 40 85 39 97-79**

**[info@sukhamburg.de](mailto:info@sukhamburg.de)**

**[www.sukhamburg.com](http://www.sukhamburg.com)**

## LEGAL NOTICE

**Copyright 2020 Schäfter+Kirchhoff GmbH. All rights reserved.**

Text, image, graphic, sound, video and animation files and their arrangement on Schäfter+Kirchhoff GmbH webpages are protected by copyright and other protective laws. The content may not be copied for commercial use or reproduced, modified or used on other websites. [\[more\]](#)