

48MB-19.5AC-D

Adapter with system mount Ø 19.5 mm for the multicube™ system



FEATURES

Adapter with system mount Ø 19.5 mm for the multicube™ system

- Flange mount to [muticubes 48MC](#)
- For attaching components with Ø 19.5 mm system mount
- Decentered 0.3 mm for use in combination with plate beam splitters

DESCRIPTION

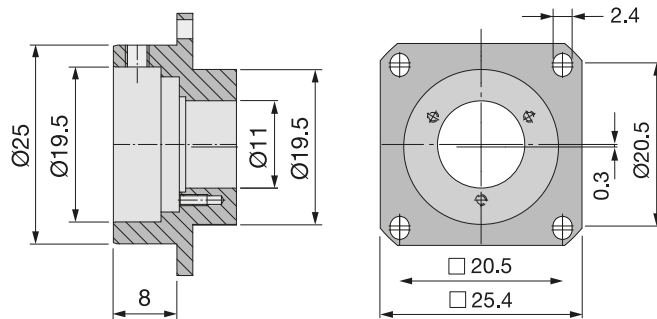
Adapter with system mount Ø 19.5 mm for the multicube™ system.
For attaching components with Ø 19.5 mm system to [muticubes 48MC](#).
Decentered 0.3 mm for use in combination with plate beam splitters

TECHNICAL DATA

48MB-19.5AC-D

Order Code	48MB-19.5AC-D
Flange	25.4 x 25.4 mm
Thooth bore	Ø 19.5 mm
	3 clamp screws
Clear aperture	Ø 11 mm
Material	black anodized aluminum
Weight	

Dimensions (for a complete dimensional drawing please refer to the downloads section)



DOWNLOADS



[980120134000.pdf \(Dimensional drawing\).](#)

RELATED PRODUCTS

48MC COMBINATION CUBES

Base unit for multicube™ system. Compatible with established cage and microbech systems.

MULTICUBE COMPONENTS

Multicube Components like mounting plates, cubes etc.

This is a printout of the page https://sukhamburg.com/products/details/48MB-19_5AC-D from 5/7/2024

CONTACT

For more information please contact:

Schäfter + Kirchhoff GmbH

Kieler Str. 212

22525 Hamburg

Germany

Tel: +49 40 85 39 97-0

Fax: +49 40 85 39 97-79

info@sukhamburg.de

www.sukhamburg.com

LEGAL NOTICE

Copyright 2020 Schäfter+Kirchhoff GmbH. All rights reserved.

Text, image, graphic, sound, video and animation files and their arrangement on Schäfter+Kirchhoff GmbH webpages are protected by copyright and other protective laws. The content may not be copied for commercial use or reproduced, modified or used on other websites. [\[more\]](#)