

48MB-19.5A

Adapter with system mount Ø 19.5 mm for the multicube™ system



FEATURES

Adapter with system mount Ø 19.5 mm for the multicube™ system

- Flange mount to [muticubes 48MC](#)
- For attaching components with Ø 19.5 mm system mount

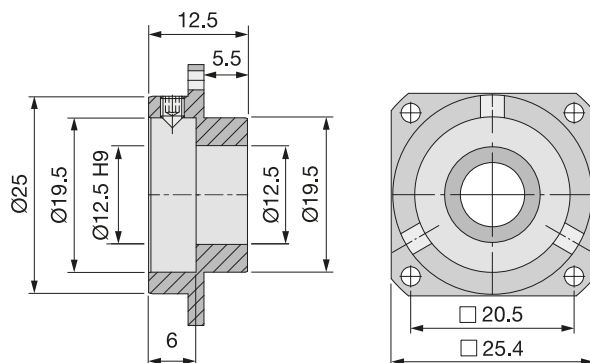
DESCRIPTION

Adapter with system mount Ø 19.5 mm for the multicube™ system
For attaching components with Ø 19.5 mm system to [muticubes 48MC](#).

TECHNICAL DATA

48MB-19.5A

Dimensions (for a complete dimensional drawing please refer to the downloads section)



DOWNLOADS



[980120134100.pdf \(Dimensional drawing\)](#)

RELATED PRODUCTS

48MC COMBINATION CUBES

Base unit for multicube™ system. Compatible with established cage and microbech systems.

MULTICUBE COMPONENTS

Multicube Components like mounting plates, cubes etc.

This is a printout of the page https://sukhamburg.com/products/details/48MB-19_5A from 5/5/2024

CONTACT

For more information please contact:

Schäfter + Kirchhoff GmbH

Kieler Str. 212

22525 Hamburg

Germany

Tel: +49 40 85 39 97-0

Fax: +49 40 85 39 97-79

info@sukhamburg.de

www.sukhamburg.com

LEGAL NOTICE

Copyright 2020 Schäfter+Kirchhoff GmbH. All rights reserved.

Text, image, graphic, sound, video and animation files and their arrangement on Schäfter+Kirchhoff GmbH webpages are protected by copyright and other protective laws. The content may not be copied for commercial use or reproduced, modified or used on other websites. [\[more\]](#)