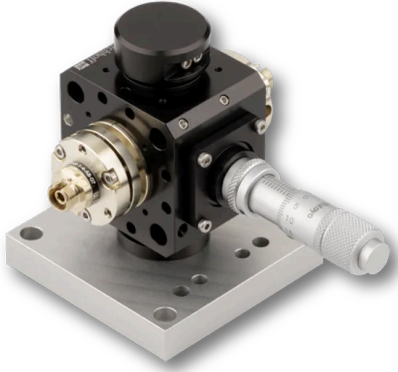


Fiber-coupled Attenuator 48AT-Comp

Compact, rugged and highly efficient opto-mechanical attenuator



FEATURES

Attenuator

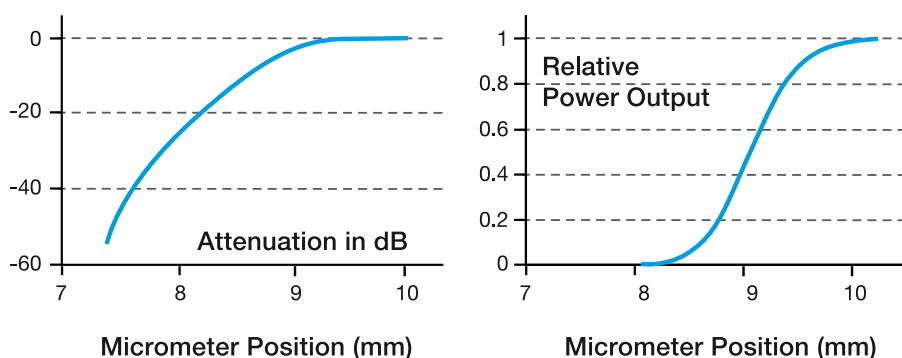
- For integrating into the multicube system
- Insertion loss typically 1.5 dB, extinction > 60 dB
- Adjustable
- Compact, rugged, transportable and sealed opto-mechanical units
- Very high long-term stability, efficiency and reproducibility
- Can be used as interface between different types of single-mode fibers or connectors as [48AT-0](#)

DESCRIPTION

Laser Attenuator 48AT-Comp is used for reproducible and precise reduction of the power output by the laser. It can be connected to the multicube system. The collimated laser beam is constricted by a [precision ball transported by a scaled micrometer screw](#). A separate subsequent single-mode fiber coupling is used as a mode filter.

This mechanically stable attenuation method allows the precise and reproducible setting of the laser power output over a wide range (typically 1.5 to > 60 dB). Unlike a power regulation by modulation of the laser current, the wavelength and polarization status of the laser beam are preserved.

A reproducible power attenuation is only assured for single-mode fibers that have a Gaussian intensity profile.



TECHNICAL DATA

Fiber-coupled Attenuator 48AT-Comp

Order code	48AT-Comp
Connector type	System mount Ø 19.5 mm
Attenuation	1.5 dB to > 60 dB @ 780 nm
Weight	360 gr

TECHNOTES

- [Working principle of 48AT-0](#)
[Working principle and attenuation.](#)

DOWNLOADS



[990812090201.pdf \(Dimensional drawing\).](#)

ACCESSORIES

60EX-4	Eccentric key with a stroke of ± 0.5 mm.
9D-12	Screwdriver WS 1.2
50HD-15	Hex key WS 1.5

13BL1-13Iris diaphragm for fiber collimators with diameter Ø
25/28 mm

RELATED PRODUCTS

**POLARIZATION
ANALYZER SK010PA**Measurement tool for coupling into polarization-
maintaining fiber cables**LASER BEAM
COUPLERS SERIES
60SMS**for coupling into single-mode and polarization-
maintaining fiber cables**MULTICUBE
COMPONENTS**Multicube Components like mounting plates, cubes
etc.

This is a printout of the page <https://sukhamburg.com/products/details/48AT-Comp> from 5/12/2024

CONTACT

For more information please contact:

Schäfter + Kirchhoff GmbH

Kieler Str. 212

22525 Hamburg

Germany

Tel: +49 40 85 39 97-0

Fax: +49 40 85 39 97-79

info@sukhamburg.de

www.sukhamburg.com

LEGAL NOTICE

Copyright 2020 Schäfter+Kirchhoff GmbH. All rights reserved.

Text, image, graphic, sound, video and animation files and their arrangement on Schäfter+Kirchhoff GmbH webpages are protected by copyright and other protective laws. The content may not be copied for commercial use or reproduced, modified or used on other websites. [\[more\]](#)