

48AT-19.5-S1

Adapter with system mount Ø 19.5 mm for the multicube™ system with integrated attenuator



FEATURES

Adapter with system mount Ø 19.5 mm for the multicube™ system with integrated attenuator

- Flange mount to [muticubes 48MC](#)
- For attaching components with Ø 19.5 mm system mount
- Attenuator with fine thread screw
- Clear aperture Ø 4 mm

DESCRIPTION

Adapter with system mount Ø 19.5 mm for the multicube™ system for attaching components with Ø 19.5 mm system to [muticubes 48MC](#).

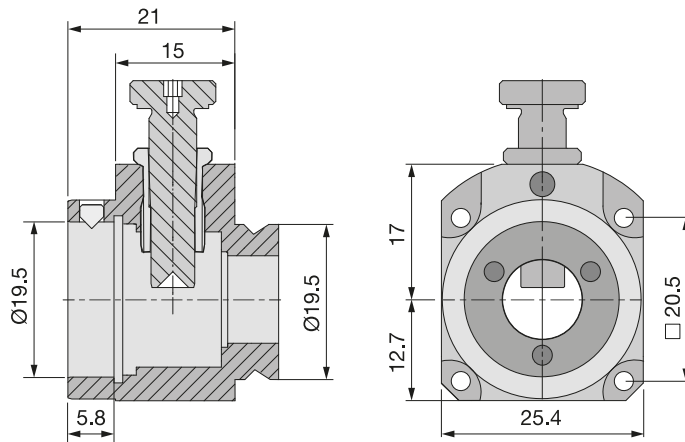
It has an integrated attenuator that can be adjusted by means of a fine thread screw.

This attenuator has to be used in combination with a single-mode fiber coupling. If used with multimode fibers also the beam profile ex fiber is affected.

TECHNICAL DATA

48AT-19.5-S1

Dimensions (for a complete dimensional drawing please refer to the downloads section)



FAQ

48AT

Can I use the 48AT attenuator with multimode fibers?

No you should not. If used with single-mode fibers the fibers serve as a mode filter and the exiting beam is still Gaussian with reduced power. In case of a multimode fiber not only the power is attenuated but also the intensity distribution ex fiber is affected.

RELATED PRODUCTS

48MC COMBINATION CUBES

Base unit for multicube™ system. Compatible with established cage and microbech systems.

MULTICUBE COMPONENTS

Multicube Components like mounting plates, cubes etc.

This is a printout of the page https://sukhamburg.com/products/details/48AT-19_5-S1 from 5/5/2024

CONTACT

For more information please contact:

Schäfter + Kirchhoff GmbH

Kieler Str. 212

22525 Hamburg

Germany

Tel: +49 40 85 39 97-0

Fax: +49 40 85 39 97-79

info@sukhamburg.de

www.sukhamburg.com

LEGAL NOTICE

Copyright 2020 Schäfter+Kirchhoff GmbH. All rights reserved.

Text, image, graphic, sound, video and animation files and their arrangement on Schäfter+Kirchhoff GmbH webpages are protected by copyright and other protective laws. The content may not be copied for commercial use or reproduced, modified or used on other websites. [\[more\]](#)