

## 19.5AM25

Adapter for 60SMS Laser Beam Couplers Outer diameter Ø 25/28 mm

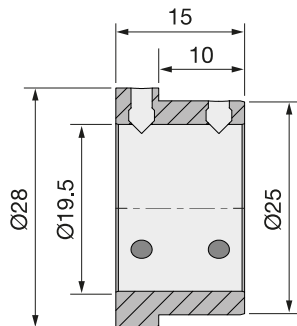


### FEATURES

Adapter for [60SMS](#) Laser Beam Couplers

- Outer diameter Ø 25/28 mm
- Fitting bore Ø 19.5 mm: accepts system mount Ø 19.5 mm
- Short version

## DESCRIPTION



## TECHNICAL DATA

19.5AM25

Order Code	19.5AM25	
Adapter	Fitting bore	Fitting bore

	Ø 19.5 mm	Ø 19.5 mm
Clear aperture		Ø 19.5 mm
Outer diameter		Ø 25/28 mm
Total length		15 mm
Material	Black anodized aluminum	
Weight		

## DOWNLOADS



[930732000300.pdf \(Dimensional drawing\).](#)

## ACCESSORIES

50HD-15

Hex key WS 1.5

## RELATED PRODUCTS

**ADAPTERS FOR 60SMS,  
60SMF, AND 60FC-A19.5**

with system mount Ø 19.5 mm

**LASER BEAM  
COUPLERS SERIES  
60SMS**

for coupling into single-mode and polarization-  
maintaining fiber cables

**ADAPTERS FOR FIBER  
OPTICS**

Adapters to use with fiber collimators and with the  
multicube™ system.

This is a printout of the page [https://sukhamburg.com/products/details/19\\_5AM25](https://sukhamburg.com/products/details/19_5AM25) from 5/7/2024

## CONTACT

For more information please contact:

Schäfter + Kirchhoff GmbH

Kieler Str. 212

22525 Hamburg

Germany

Tel: +49 40 85 39 97-0

Fax: +49 40 85 39 97-79

[info@sukhamburg.de](mailto:info@sukhamburg.de)

[www.sukhamburg.com](http://www.sukhamburg.com)

## LEGAL NOTICE

**Copyright 2020 Schäfter+Kirchhoff GmbH. All rights reserved.**

Text, image, graphic, sound, video and animation files and their arrangement on Schäfter+Kirchhoff GmbH webpages are protected by copyright and other protective laws. The content may not be copied for commercial use or reproduced, modified or used on other websites. [\[more\]](#)