

19.5AF25.4-S

Adapter system mount Ø 19.5 mm to fitting bore Ø 25.4 mm



FEATURES

The adapter 19.5AF25.4-S allows to attach Ø 25.4 mm or Ø 25 mm mounted optics to fiber collimators of series [60FC-L](#) or [60FC-T](#) with an outer diameter Ø 25 mm

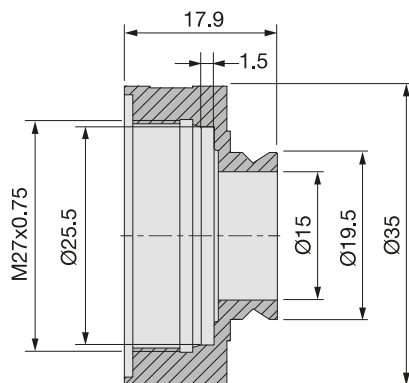
- System mount Ø 19.5 mm
- Fitting bore Ø 25.4 mm that holds Ø 25.4 mm or Ø 25 mm mounted optics
- Clear aperture Ø 15 mm
- Black anodized aluminum

TECHNICAL DATA

19.5AF25.4-S

Order Code		19.5AF25.4.S
Adapter	System mount	Fitting bore
	Ø 19.5 mm	Ø 25.4 mm Ø 25 mm
Steel ring		Threaded cap
Clear aperture		Ø 15 mm
Weight		8 g

Dimensions (for a complete dimensional drawing please refer to the downloads section)



DOWNLOADS



[980210000602_2.pdf \(Dimensional drawing\).](#)

RELATED PRODUCTS

ATTACHMENT OPTICS SERIES 13

to attach in the front of collimators with system mount
Ø19.5 mm

ADAPTERS FOR SYSTEM MOUNT Ø 19.5MM

for incorporation into the multicube™ system

48WP-M25.4

Rotary adapter system mount Ø 19.5 mm for
mounted wave plates

This is a printout of the page https://sukhamburg.com/products/details/19_5AF25_4-S from 5/5/2024

CONTACT

For more information please contact:

Schäfter + Kirchhoff GmbH

Kieler Str. 212

22525 Hamburg

Germany

Tel: +49 40 85 39 97-0

Fax: +49 40 85 39 97-79

info@sukhamburg.de

www.sukhamburg.com

LEGAL NOTICE

Copyright 2020 Schäfter+Kirchhoff GmbH. All rights reserved.

Text, image, graphic, sound, video and animation files and their arrangement on Schäfter+Kirchhoff GmbH webpages are protected by copyright and other protective laws. The content may not be copied for commercial use or reproduced, modified or used on other websites. [\[more\]](#)