

13PF-P-1300-L

Dichroic polarization filter (long version)



FEATURES

Polarization filter with system mount Ø 19.5 mm for attaching to [60FC-L](#) and [60FC-T](#) Fiber Collimators with outer diameter Ø 25 mm. This filter transmits only the linear polarized component of the radiation.

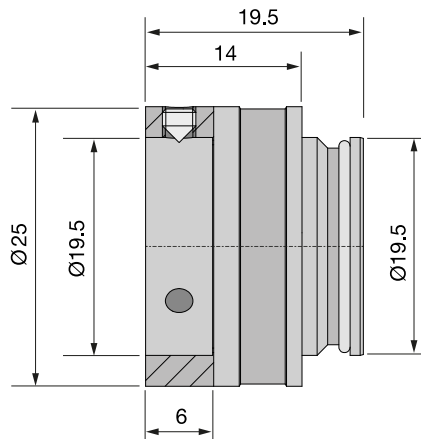
- Dichroic polarization filter. The filter is laminated to a glass substrate with an 0.5° inclined mounting in order to avoid direct back-reflections
- Polarization extinction ratio 10.000:1
- Surface deviation < $\lambda/4$
- Clear aperture: Ø 12 mm
- System mount: Ø 19.5 mm
- AR Coating: 1280 - 1300 nm
- Long-form housing with system mount Ø 19.5 mm for adding additional attachment optics

TECHNICAL DATA

13PF-P-1300-L

Order Code	13PF-P-1300-L
Type	Dichroic polarization filter
Wavelengths range	1280 - 1500 nm
Extinction	10.000:1
Transmission	> 96 - 98 %
AR Coating	1280 - 1500 nm (residual reflectivity < 1.5 %)
Surface deviation	< $\lambda/4$
Clear aperture	12 mm
Inclined mount	0.5°
System mount	Ø 19.5 mm

Front fitting	System mount Ø 19.5 mm
Housing material	Nickel silver
Weight	42 g
Dimensions (for a complete dimensional drawing please refer to the downloads section)	



DOWNLOADS



[930730090500.pdf \(Dimensional drawing\)](#)

ACCESSORIES

POLARIZATION ANALYZER SK010PA

Measurement tool for coupling into polarization-maintaining fiber cables

RELATED PRODUCTS

POLARIZATION FILTERS 5PF

for attaching to 60FC Fiber Collimators

This is a printout of the page <https://sukhamburg.com/products/details/13PF-P-1300-L> from 5/4/2024

CONTACT

For more information please contact:

Schäfter + Kirchhoff GmbH

Kieler Str. 212

22525 Hamburg

Germany

Tel: +49 40 85 39 97-0

Fax: +49 40 85 39 97-79

info@sukhamburg.de

www.sukhamburg.com

LEGAL NOTICE

Copyright 2020 Schäfter+Kirchhoff GmbH. All rights reserved.

Text, image, graphic, sound, video and animation files and their arrangement on Schäfter+Kirchhoff GmbH webpages are protected by copyright and other protective laws. The content may not be copied for commercial use or reproduced, modified or used on other websites. [\[more\]](#)