

13PF-C-1100-L

Polarization beam splitter cube (long version)



FEATURES

Polarization filter with system mount Ø 19.5 mm for attaching to [60FC-L](#) and [60FC-T](#) Fiber Collimators with outer diameter Ø 25 mm. This filter transmits only the linear polarized component of the radiation.

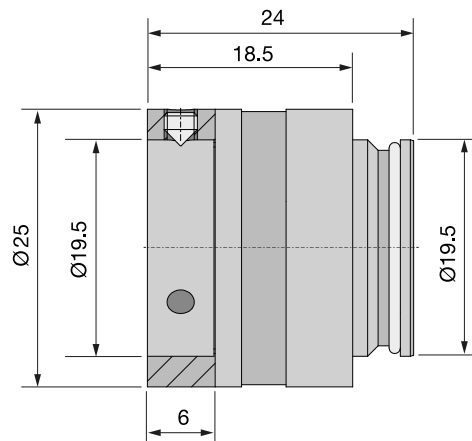
- Polarization beam splitter cube with deflection of the unwanted orthogonally polarized radiation
- Polarization extinction ratio 10.000:1
- Surface deviation $< \lambda/4$
- Clear aperture: Ø 10 mm
- System mount: Ø 19.5 mm
- AR Coating: 1000 - 1700 nm
- Long-form housing with system mount Ø 19.5 mm for adding additional attachment optics

TECHNICAL DATA

13PF-C-1100-L

Order Code	13PF-C-1100-L
Type	Polarizing cube beam splitter
Wavelengths range	1100 - 1700 nm
Extinction	10.000:1
Transmission	> 98 %
AR Coating	yes
Surface deviation	$< \lambda/4$
Clear aperture	10 mm
System mount	Ø 19.5 mm
Front fitting	System mount Ø 19.5 mm

Housing material	Nickel silver
Weight	42 g
Dimensions (for a complete dimensional drawing please refer to the downloads section)	



DOWNLOADS



[930730090300.pdf \(Dimensional drawing\).](#)

ACCESSORIES

POLARIZATION ANALYZER SK010PA

Measurement tool for coupling into polarization-maintaining fiber cables

RELATED PRODUCTS

POLARIZATION FILTERS 5PF

for attaching to 60FC Fiber Collimators

This is a printout of the page <https://sukhamburg.com/products/details/13PF-C-1100-L> from 5/6/2024

CONTACT

For more information please contact:

Schäfter + Kirchhoff GmbH

Kieler Str. 212

22525 Hamburg

Germany

Tel: +49 40 85 39 97-0

Fax: +49 40 85 39 97-79

info@sukhamburg.de

www.sukhamburg.com

LEGAL NOTICE

Copyright 2020 Schäfter+Kirchhoff GmbH. All rights reserved.

Text, image, graphic, sound, video and animation files and their arrangement on Schäfter+Kirchhoff GmbH webpages are protected by copyright and other protective laws. The content may not be copied for commercial use or reproduced, modified or used on other websites. [\[more\]](#)