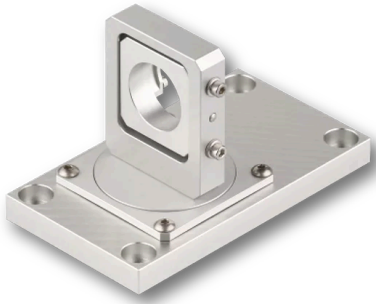


## 13MK-25-3D-M6

Mounting Console with flat base plate



### FEATURES

The Mounting Console of type 13MK-25-3D-M6 with flat base plate allows a precise and mechanically rugged alignment of Laser Modules with Ø 25/28 mm. The lasers are held by means of a clamp collar in such a way that the focussing and focus locking mechanism remain accessible. The Mounting Console is designed for all lasers with Ø 25/28 mm and provide 3 degrees of freedom:

- Drilling pattern 50 x 100 mm, Ø 6.5 mm
- Rotation (0 - 360°) around the optical axis
- In-plane rotation (0 - 360°)
- Tilt (inclination, ± 5°)

## DESCRIPTION

The Mounting Consoles of type 13MK-25-3D-M6 with flat base plate allow a precise and mechanically rugged alignment of Laser Modules with Ø 25/28 mm. The lasers are held by means of a clamp collar in such a way that the focussing and focus locking mechanism remain accessible. The Mounting Console provides 3 degrees of freedom:

- Drilling pattern 50 x 100 mm, Ø 6.5 mm
- Rotation (0 - 360°) around the optical axis
- In-plane rotation (0 - 360°)
- Tilt  $\pm 5^\circ$  (inclination)

The Mounting Console is designed for all lasers with Ø 25/28 mm. For Laser Line Generators with a fan angle, e.g. 13LR, 13LN or 5LM and 5LP the mounting console type [13MK-25-36-10-M6](#) might be sufficient.



Example of use

## DOWNLOADS



[930412090800.pdf \(Dimensional drawing\)](#).

## ACCESSORIES

50HD-20	Hex key WS 2
50HD-25	Hex key WS 2.5

## RELATED PRODUCTS

13MK-25-3D-M	Mounting Console with base plate with dovetail profile
13MK-25-36-10-M6	Mounting Console with flat base plate

This is a printout of the page <https://sukhamburg.com/products/details/13MK-25-3D-M6> from 5/6/2024

## CONTACT

For more information please contact:

**Schäfter + Kirchhoff GmbH**

**Kieler Str. 212**

**22525 Hamburg**

**Germany**

**Tel: +49 40 85 39 97-0**

**Fax: +49 40 85 39 97-79**

**[info@sukhamburg.de](mailto:info@sukhamburg.de)**

**[www.sukhamburg.com](http://www.sukhamburg.com)**

## LEGAL NOTICE

**Copyright 2020 Schäfter+Kirchhoff GmbH. All rights reserved.**

Text, image, graphic, sound, video and animation files and their arrangement on Schäfter+Kirchhoff GmbH webpages are protected by copyright and other protective laws. The content may not be copied for commercial use or reproduced, modified or used on other websites. [\[more\]](#)