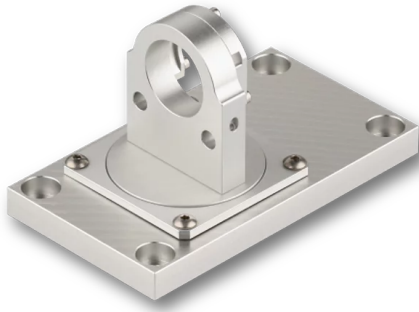


## 13MK-25-36-10-M6

Mounting Console with flat base plate



### FEATURES

The Mounting Console of type 13MK-25-36-10-M6 with flat base plate allows a precise and mechanically rugged alignment of Laser Modules with  $\varnothing 25/28$  mm. The lasers are held by means of a clamp collar in such a way that the focussing and focus locking mechanism remain accessible. The Mounting Console is designed for lasers line generators with fan angle (e.g. series 13LR or 13LN, 5LM or 5LP (5LM, 5LP with  $\varnothing 25/28$  mm only)) and provides 2 degrees of freedom:

- Drilling pattern 50 x 100 mm,  $\varnothing 6.5$  mm
- Rotation (0 - 360°) around the optical axis
- In-plane rotation (0 - 360°)

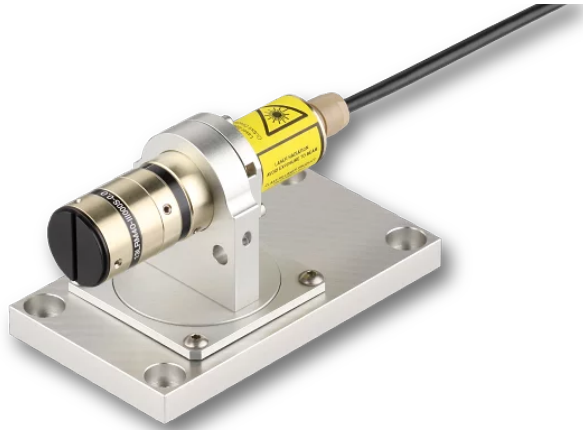
## DESCRIPTION

The Mounting Consoles of type 13MK-25-36-10-M6 with flat base plate allow a precise and mechanically rugged alignment of Laser Modules with  $\varnothing 25/28$  mm. The lasers are held by means of a clamp collar in such a way that the focussing and focus locking mechanism remain accessible. The Mounting Console provides 2 degrees of freedom:

- Drilling pattern 50 x 100 mm, Ø 6.5 mm
- Rotation (0 - 360°) around the optical axis
- In-plane rotation (0 - 360°)

It is designed for Laser Line Generators with a fan angle, e.g. 13LR, 13LN or 5LM and 5LP.

For Laser Line Generators that generate semie-telecentric lines, for Laser Diode Collimators or for Focus Generators the mounting console type [13MK-25-3D-M6](#) is recommended.



Example of use

## DOWNLOADS

[930412090700.pdf](#)

## RELATED PRODUCTS

<b>13MK-25-36-10-M</b>	Mounting Console with base plate with dovetail profile
<b>13MK-25-3D-M6</b>	Mounting Console with flat base plate

This is a printout of the page <https://sukhamburg.com/products/details/13MK-25-36-10-M6> from 4/25/2024

## CONTACT

For more information please contact:

Schäfter + Kirchhoff GmbH

Kieler Str. 212

22525 Hamburg

Germany

Tel: +49 40 85 39 97-0

Fax: +49 40 85 39 97-79

[info@sukhamburg.de](mailto:info@sukhamburg.de)

[www.sukhamburg.com](http://www.sukhamburg.com)

## LEGAL NOTICE

**Copyright 2020 Schäfter+Kirchhoff GmbH. All rights reserved.**

Text, image, graphic, sound, video and animation files and their arrangement on Schäfter+Kirchhoff GmbH webpages are protected by copyright and other protective laws. The content may not be copied for commercial use or reproduced, modified or used on other websites. [\[more\]](#)