

12AM19.5

Adapter Ø 12 mm to system mount Ø 19.5 mm



FEATURES

Adapter for fiber collimators type [60FC](#) / [60FC-E](#) with diameter Ø 12 mm. Indirect clamping of the collimators.

With system mount Ø 19.5 mm e.g. for integration into the multicube™ system.

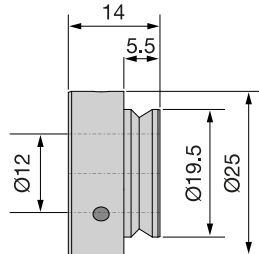
- System Mount Ø 19.5 mm
- Fitting bore Ø 12 mm
- Clear aperture Ø 19.5 mm

TECHNICAL DATA

12AM19.5

Order Code	12AM19.5	
Adapter	System mount	Fitting bore
	Ø 19.5 mm	Ø 12 mm
		Indirect clamping
Clear aperture	Ø 12 mm	
Material	Nickel silver	
Weight	34 g	

Dimensions (for a complete dimensional drawing please refer to the downloads section)



DOWNLOADS



[930410830300.pdf \(Dimensional drawing\)](#)

RELATED PRODUCTS

ADAPTERS FOR 60FC

for Ø 12 mm to diameter Ø 25 mm, Ø 1" or with system mount Ø 19.5 mm

FIBER COLLIMATOR SERIES 60FC

for collimating radiation exiting an optical fiber or as an incoupler

FIBER COLLIMATOR SERIES 60FC-F

Fiber Collimator/Fiber Coupler with fine-focussing mechanism

This is a printout of the page https://sukhamburg.com/products/details/12AM19_5 from 4/29/2024

CONTACT

For more information please contact:

Schäfter + Kirchhoff GmbH

Kieler Str. 212

22525 Hamburg

Germany

Tel: +49 40 85 39 97-0

Fax: +49 40 85 39 97-79

info@sukhamburg.de

www.sukhamburg.com

LEGAL NOTICE

Copyright 2020 Schäfter+Kirchhoff GmbH. All rights reserved.

Text, image, graphic, sound, video and animation files and their arrangement on Schäfter+Kirchhoff GmbH webpages are protected by copyright and other protective laws. The content may not be copied for commercial use or reproduced, modified or used on other websites. [\[more\]](#)