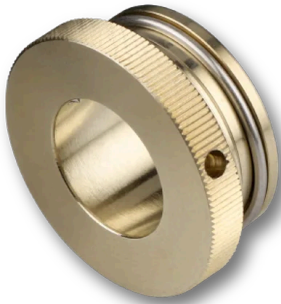


## 12AC19.5

Adapter system mount Ø 19.5 mm to fitting bore Ø 12 mm



### FEATURES

The adapter 12AC19.5 is an adapter from system mount Ø 19.5 mm to a fitting bore Ø 12 mm.

- System mount Ø 19.5 mm
- Fitting bore Ø 12 mm
- Clear aperture Ø 12 mm
- Nickel silver

## TECHNICAL DATA

12AC19.5

Order Code		12AC19.5
Adapter	System mount	Fitting bore
	Ø 19.5 mm	Ø 12 mm
	Steel ring	
Clear aperture		Ø 12 mm
Material		Nickel silver / steel
Weight		17 g

## RELATED PRODUCTS

ATTACHMENT OPTICS  
SERIES 13

to attach in the front of collimators with system mount  
Ø19.5 mm

**ADAPTERS FOR  
SYSTEM MOUNT Ø  
19.5MM**

for incorporation into the multicube™ system

**ADAPTERS FOR FIBER  
OPTICS**

Adapters to use with fiber collimators and with the multicube™ system.

This is a printout of the page [https://sukhamburg.com/products/details/12AC19\\_5](https://sukhamburg.com/products/details/12AC19_5) from 5/7/2024

## CONTACT

For more information please contact:

Schäfter + Kirchhoff GmbH

Kieler Str. 212

22525 Hamburg

Germany

Tel: +49 40 85 39 97-0

Fax: +49 40 85 39 97-79

[info@sukhamburg.de](mailto:info@sukhamburg.de)

[www.sukhamburg.com](http://www.sukhamburg.com)

## LEGAL NOTICE

**Copyright 2020 Schäfter+Kirchhoff GmbH. All rights reserved.**

Text, image, graphic, sound, video and animation files and their arrangement on Schäfter+Kirchhoff GmbH webpages are protected by copyright and other protective laws. The content may not be copied for commercial use or reproduced, modified or used on other websites. [\[more\]](#)