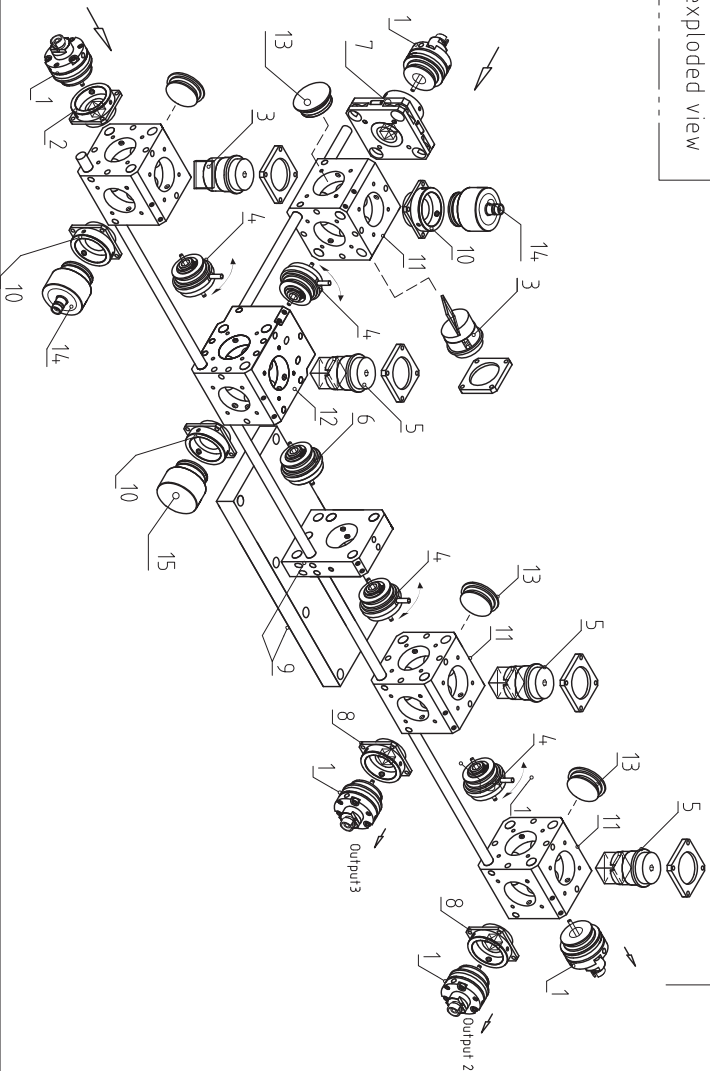
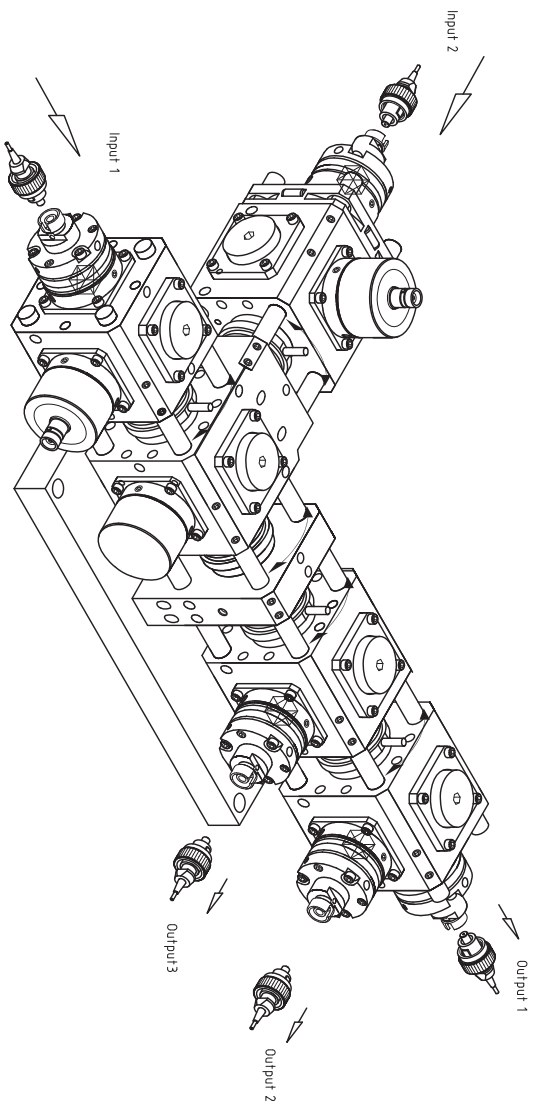
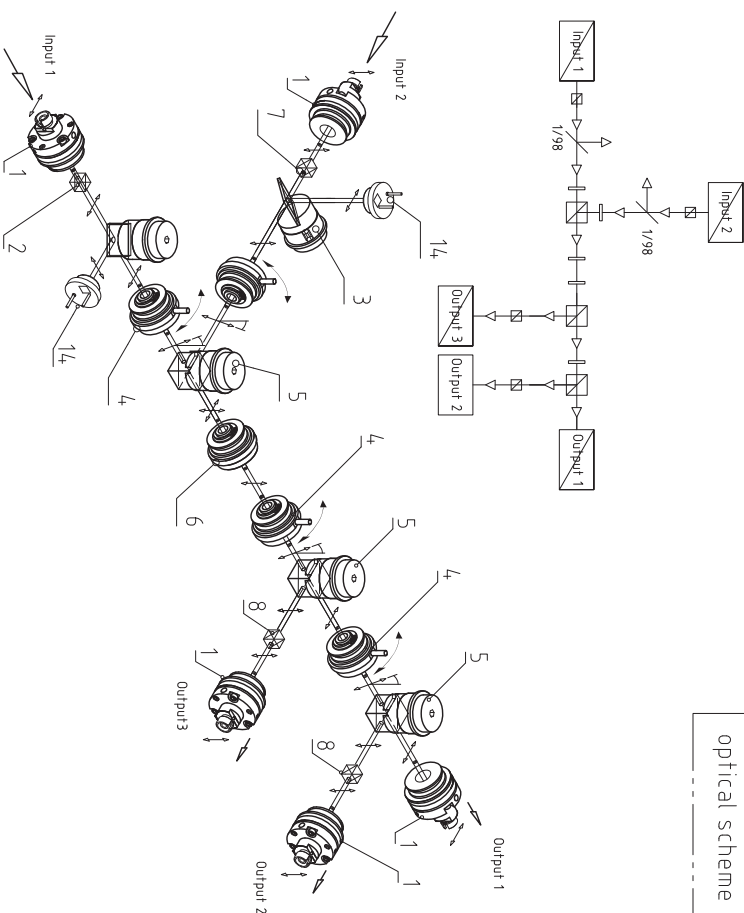


exploded view



optical scheme



- 5 x pos. 1 : 60SMS-1-4-XXX-xx Laser Beam Coupler
- 1 x pos. 2 : 48PM-S-D Polarizer (small) in off axis adj. mount
- 2 x pos. 3 : 48BS Beam splitter 98:1
- 4 x pos. 4 : 48WP Retarding optics lambda/2
- 3 x pos. 5 : 48PM Polarization beam splitter in adjustment mount
- 1 x pos. 6 : 48WP-0C Dichroic retarding optics
- 1 x pos. 7 : 48PM-SXY1 Polarizer (small) in lateral adj. mount
- 2 x pos. 8 : 48PM-S Polarizer (small) in adj. mount
- 1 x pos. 9 : 48MB19,5-150 Console
- 2 x pos. 10 : 48MC-19,5AC Adapter
- 4 x pos. 11 : 48MC-SM-19,5 Combination cube
- 1 x pos. 12 : 48MC-LTS-19,5 Combination cube
- 9 x pos. 13 : 48C-19,5 Cap
- 2 x pos. 14 : 48PD-65 Photo diode for monitoring
- 1 x pos. 15 : 48LT-19,5 optical trap
- 1 x pos. 16 : MON System assembly and pre-adjustment

DIN 7168	Oberfläche	Maßstab	1:2	Position	Menge
fein mittel grob		#507664			
Name		fiber port cluster 2 to 3 dc			
Datum		12.07.2010			
Bearb.		12.07.2010			
Gepr.					
Norm					
Schäfer&Kirchhoff OPTIK-SYSTEME UND MESSTECHNIK optik@schaeferkirchhoff.de					
EDV Nr.		980129090503			
Name		9801-2909-0503			
Datum		12.07.2010			
Zust.		12.07.2010			
Änderung					