

Laser power adjustment,
turn clock wise to increase
using screw-driver size 1.6mm
9D-16 ③

A-A adjustment of focus setting
using eccentric-key 60EX-4 ②

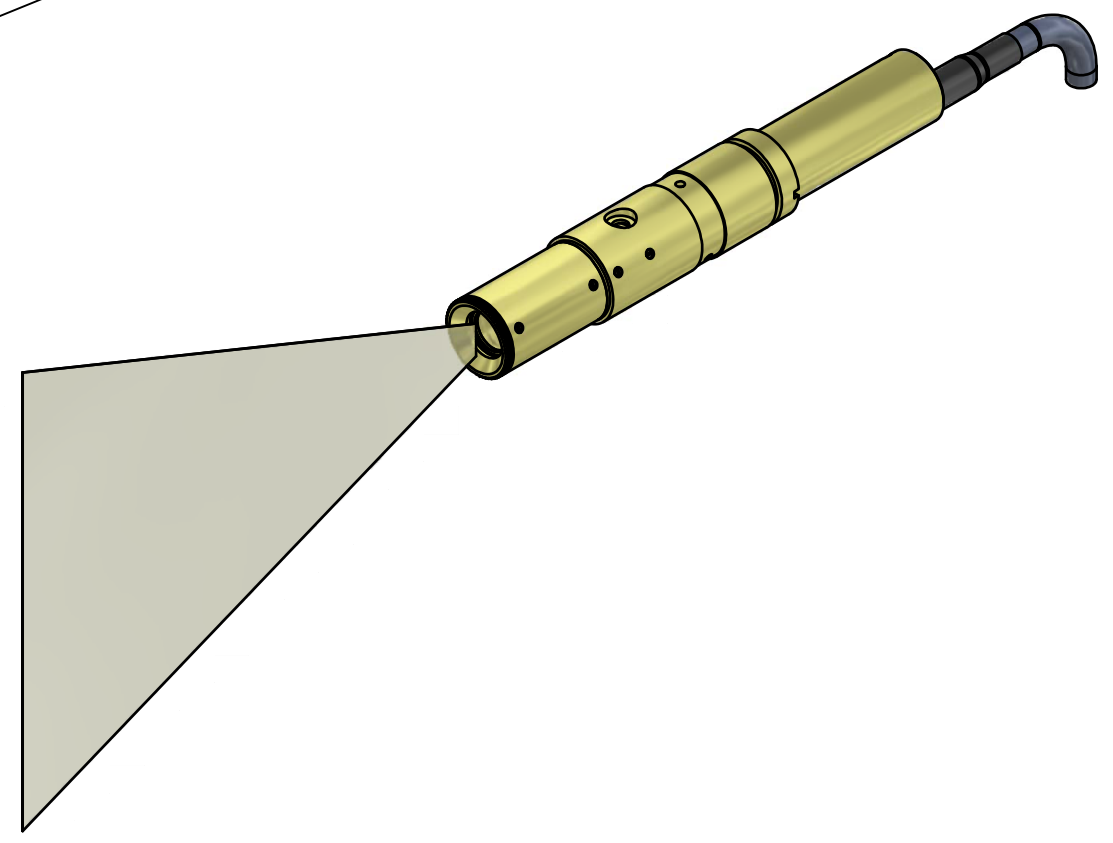
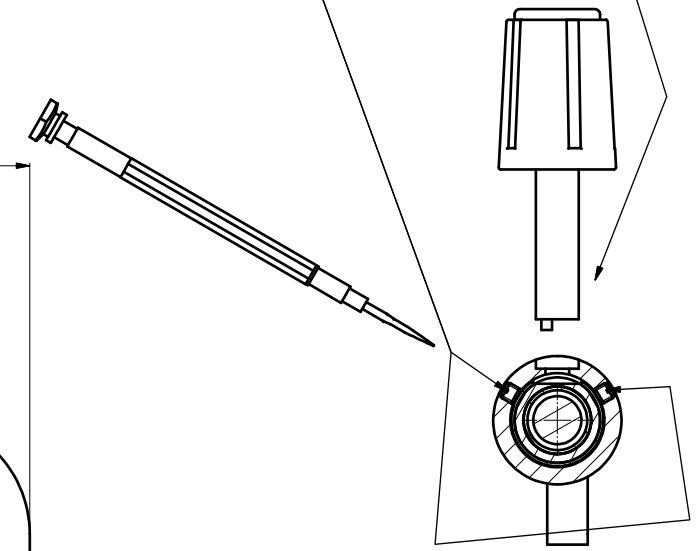
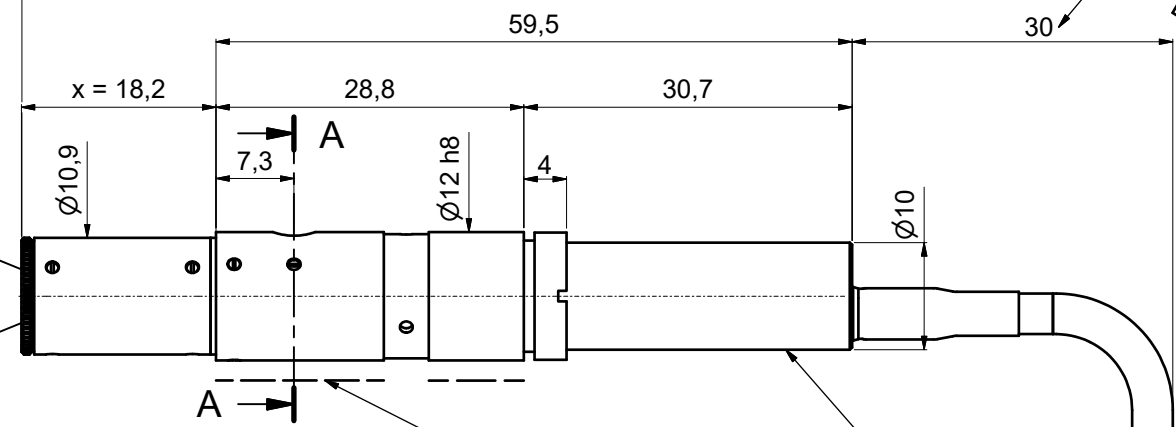
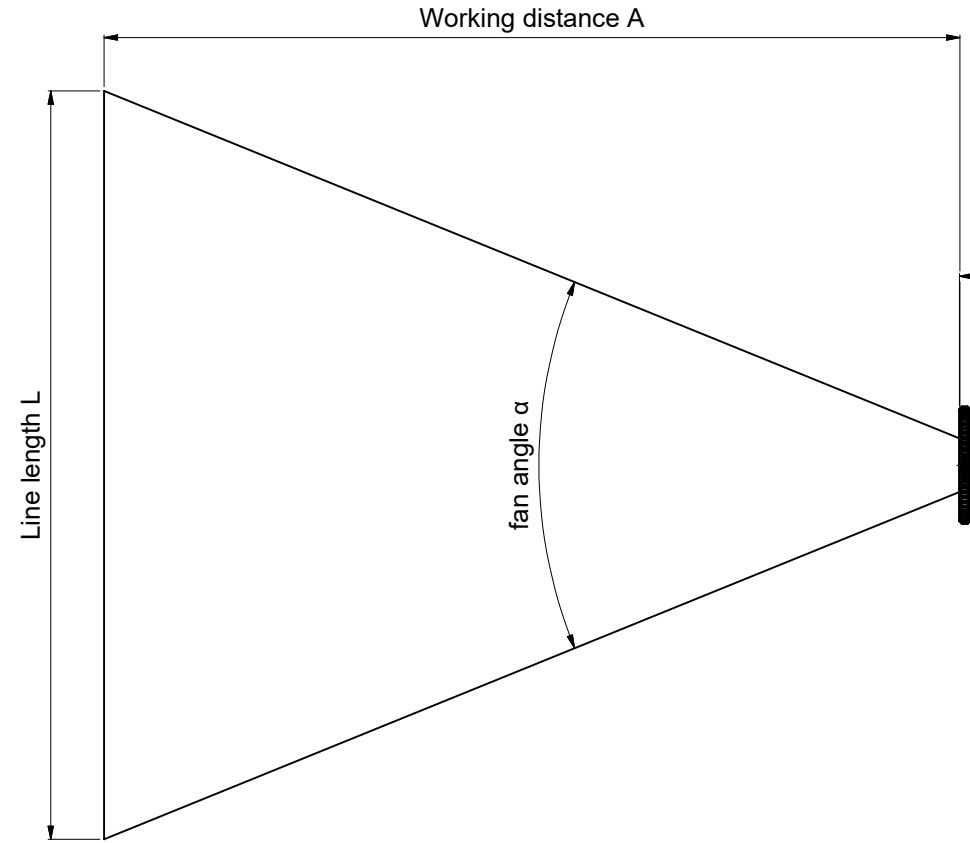
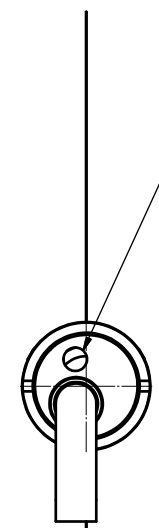
clamp screws
for locking optics position (2x120°)
using screw-driver size 1.2mm ①
9D-12

min.bend radius
for cable
30

Housing of electronics.
Sensitive to radial force
-not usable for attachment!

Clamping region
for mounting

! Don't touch any other screws !



Tools for assembly and adjustment

screw driver size 1.2mm 9D-12	eccentric-key 60EX-4	screw driver size 1.6mm 9D-16
①	②	③

Allgemein-toleranz ISO 2768 - f		Maßstab: 2:1
5LP+25CM x=18,2		
5LP+25CM x=18,2		
Laser Microline Generator		
Schäfer&Kirchhoff OPTO-SENSORIK UND MESSTECHNIK		Blatt A2
9211-2000-0622		Blatt: 1
Zust.	Änderungen	Datum
Date: 921120000622.idw		Model: 921120000622.iam