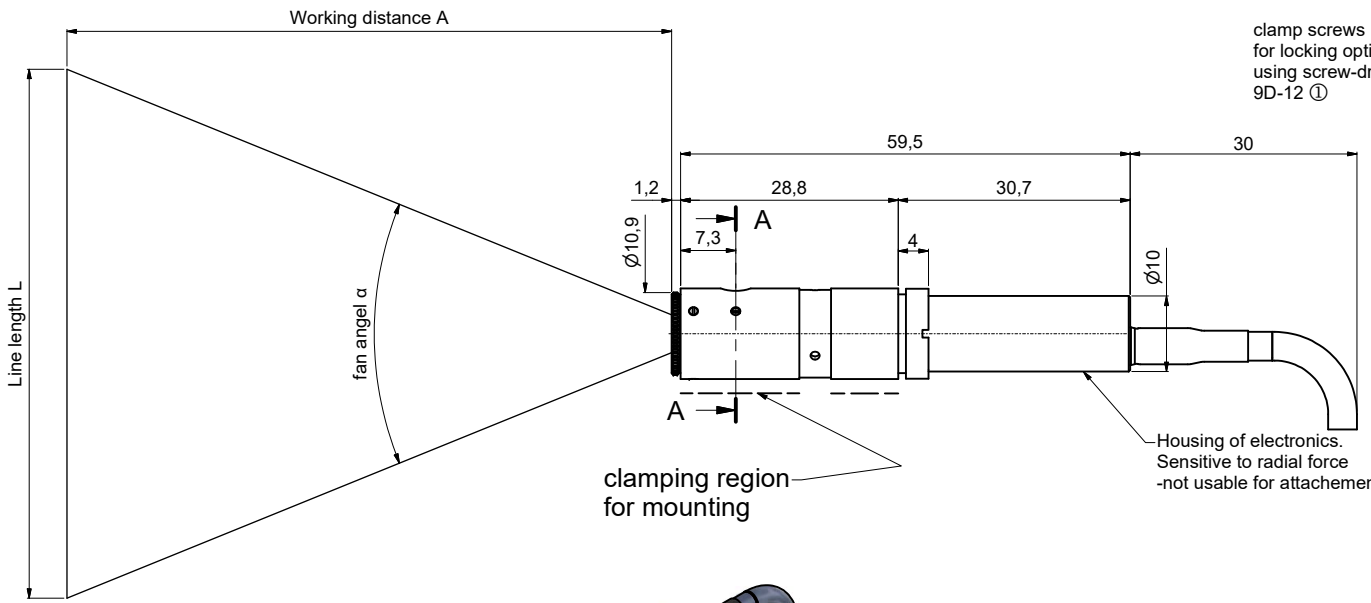
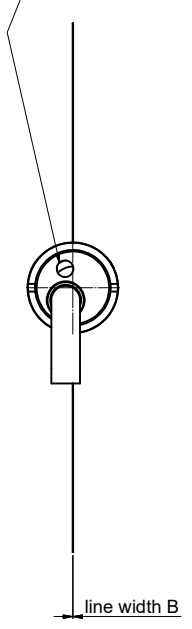


Laser power adjustment, turn clock wise to increase using screw-driver size 1.6mm 9D-16 ③



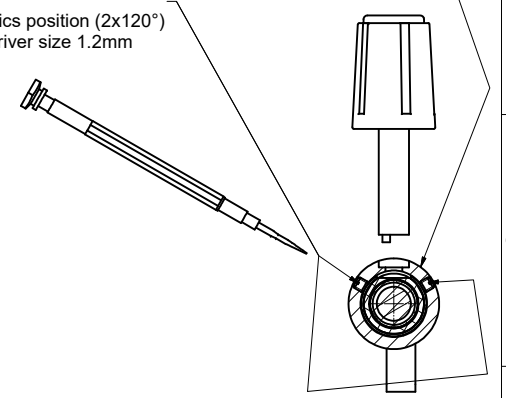
clamping region for mounting

Housing of electronics. Sensitive to radial force -not usable for attachment!

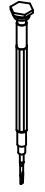
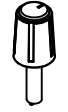

clamp screws for locking optics position (2x120°) using screw-driver size 1.2mm 9D-12 ①

A-A

adjustment of focus setting using eccentric-key 60EX-4 ②



Tools for assembly and adjustment

screw driver size 1.2mm 9D-12 ①	eccentric-key 60EX-4 ②	screw driver size 1.6mm 9D-16 ③
		
1		

! Don't touch any other screws !

Allgemeintoleranz ISO 2768 - f		Maßstab: 2:1	
5LM + 25CM + 12		5LM + 25CM + 12	
Laser Microline Generator		Laser Microline Generator	
Schäfer&Kirchhoff OPTO-SENSORIK UND MESSTECHNIK		9211-2000-0625	
Datei: 921120000625.idw		Blatt A2	
Blatt: 1		Blatt: 1	