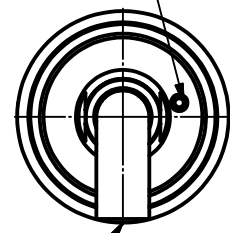
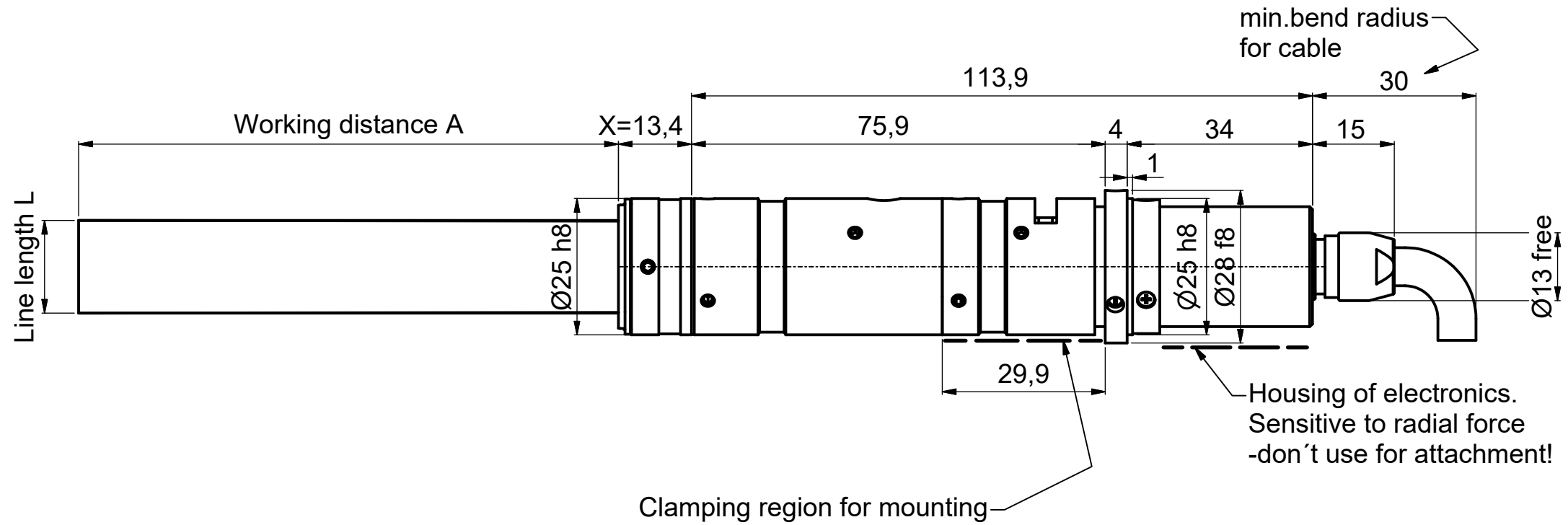


Laser power adjustment,
turn clock wise to increase
using screw-driver size 1.6mm
9D-16 ①



Orientation of laser line
with respect to housing



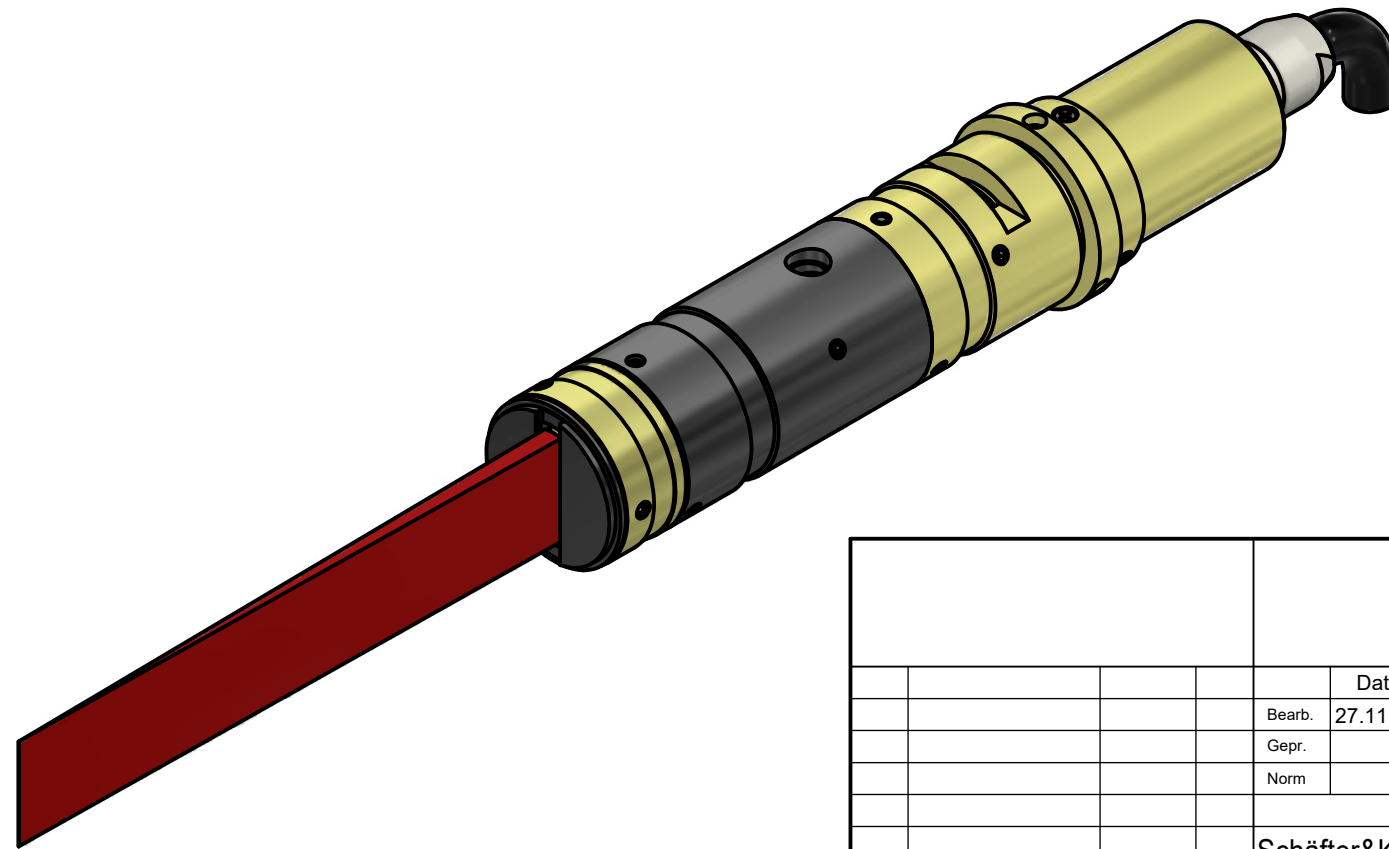
Tools for assembly
and adjustment

screw driver
size 1.6mm
9D-16

①



! Don't touch any other screws !



		Allgemein- toleranz ISO 2768 - f	Maßstab: 1:1
	Datum	Name	13LTM + 90CM
Bearb.	27.11.2013	Trapp	
Gepr.			
	Norm		Laser Diode Modules
Schäfter&Kirchhoff OPTO-SENSORIK UND MESSTECHNIK OPTIK-ENTWICKLUNG-ELEKTRONIK-SENSORTECHNIK-SOFTWARE			Blatt A3
Datei: 951210000045.idw			Blatt: 1
Zust.	Änderungen	Datum	Modell: 951210000045.iam