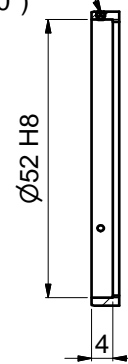




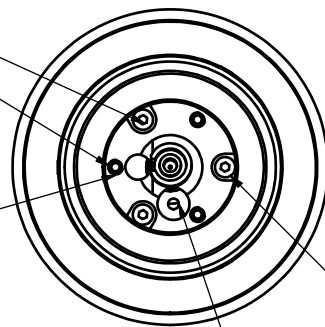
A-A

Clamping screw for locking of lens attachments (3x120°)



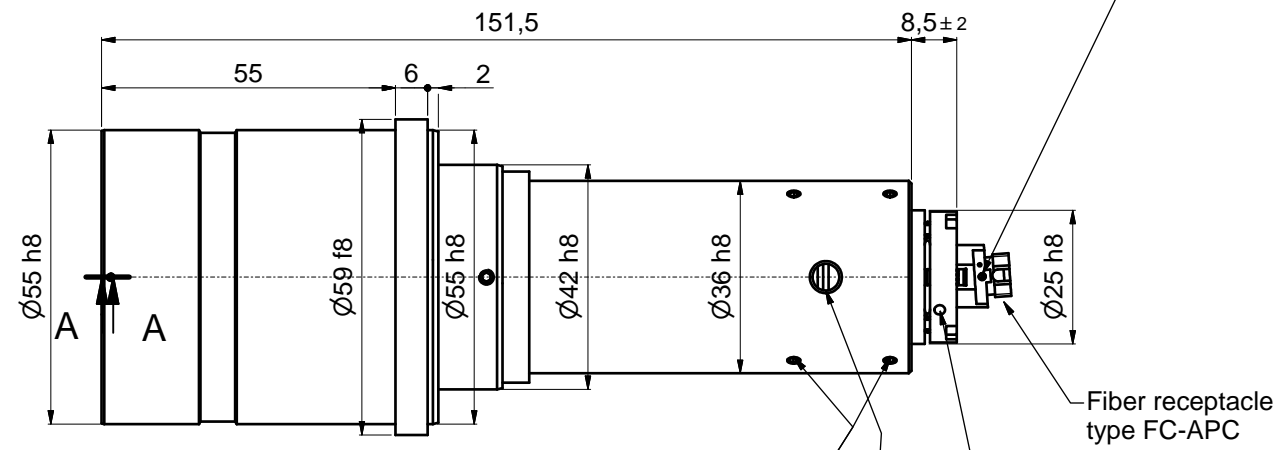
! Pin screw for additional locking of the fiber ferrule:
 - before pulling the FC-connector:
 unlock the pin screw.
 - before inserting the FC-connector:
 make sure the ferrule receptacle is not blocked
 by the pin screw !

① Thrust and tension screw (3x120°)
 for tilt adjustment
 with hex key wrench size 1.5mm
 50HD-15



Thrust screw M3 max.torque 50Ncm

Tension screw M2 max.torque 40Ncm



Stop screw (2x/3x120°) for locking optics position using hex key 1.5mm 50HD-15 ①

Stop screw (2x120°) for lock/unlock of the rotation of the quarter wave plate with screw driver 1.2mm 9D-12 ②

adjustment of focus setting using eccentric-key 55EX-5 ③

Fiber receptacle type FC-APC

Rotation of the quarter wave plate with adjustment key ④

Tools for assembly and adjustment

hex-key size 1.5mm 50HD-15 ①	screw driver size 1.2mm 9D-12 ②	eccentric-key 55EX-5 ③	Adjustment key 60Z-2303 ④

! Don't touch any other screws !

Allgemeintoleranz ISO 2768 - f		Maßstab: 2:1	
Datum: 18.05.2016		Name: A.Trapp	
Gepr.:		60FC-Q-4-M150-xx	
Norm:		Fiber receptacle type FC-APC	
Schäfer&Kirchhoff OPTO-SENSORIK UND MESSTECHNIK		9802-4150-0013	
Zust.	Änderungen	Datum	Name
		Date: 980241500013.idw	Model: 980241500013.iam