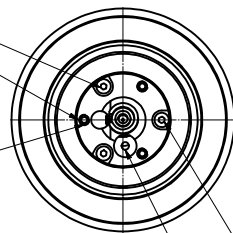


Clamping screw for locking of lens attachments (3x120°)

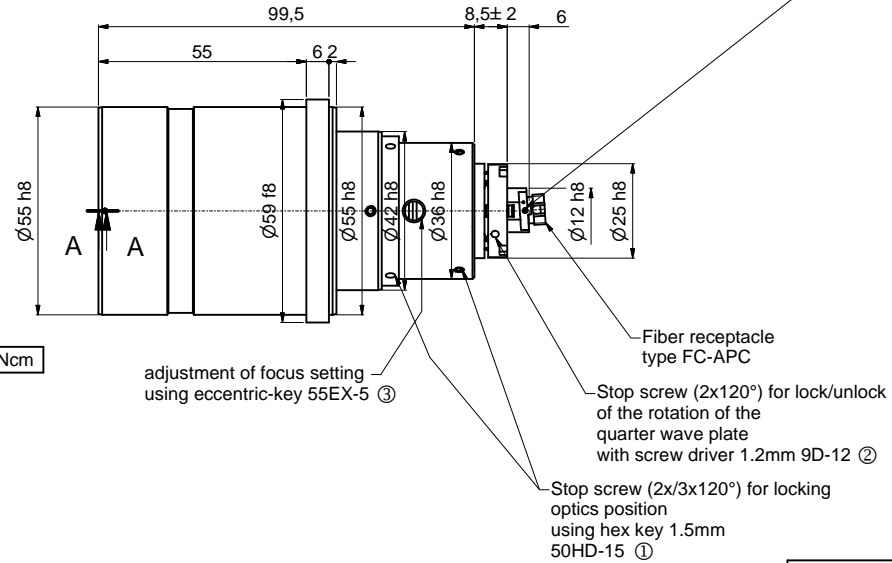
! Pin screw for additional locking of the fiber ferrule:  
 - before pulling the FC-connector:  
 unlock the pin screw.  
 - before inserting the FC-connector:  
 make sure the ferrule receptacle is not blocked by the pin screw !

Thrust and tension screw (3x120°) for tilt adjustment with hex key wrench size 1.5mm 50HD-15 ①



Thrust screw M3 max.torque 50Ncm

Tension screw M2 max.torque 40Ncm



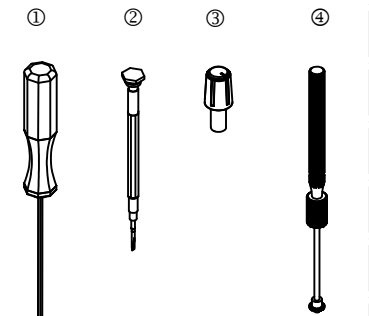
Stop screw (2x/3x120°) for lock/unlock of the rotation of the quarter wave plate with screw driver 1.2mm 9D-12 ②

Stop screw (2x/3x120°) for locking optics position using hex key 1.5mm 50HD-15 ①

Rotation of the quarter wave plate with adjustment key ④

Tools for assembly and adjustment

- hex-key size 1.5mm 50HD-15 ①
- screw driver size 1.2mm 9D-12 ②
- eccentric-key 55EX-5 ③
- Adjustment key 60Z-2303 ④



! Don't touch any other screws !

Allgemeintoleranz ISO 2768 - f		Maßstab: 2:1	
60FC-Q-4-M100-xx		60FC-Q-4-M100-xx	
Name: A.Trapp		Name: A.Trapp	
Datum: 18.05.2016		Datum: 18.05.2016	
Gepr.:		Gepr.:	
Norm:		Norm:	
Schäfer&Kirchhoff OPTO-SENSORIK UND MESSTECHNIK		Schäfer&Kirchhoff OPTO-SENSORIK UND MESSTECHNIK	
8902-4150-0015		8902-4150-0015	
Blatt A2		Blatt A2	
Blatt: 1		Blatt: 1	
Zust.	Änderungen	Datum	Name
		Datei: 980241500015.idw	Model: 980241500015.iam