

Thrust and tension screw (3x120°)  
for tilt adjustment  
with hex key wrench size 1.5mm  
50HD-15 ①

clamp screws  
for accessory optics (3x120°)  
using hex-key size 1.5mm  
50HD-15 ①

! Pin screw for additional locking of the fiber ferrule:  
- before pulling the FC-connector:  
unlock the pin screw.  
- before inserting the FC-connector:  
make sure the ferrule receptacle is not blocked  
by the pin screw !

Thrust sciew M3 max.torque 50Ncm

Rotation of the quarter wave plate  
with adjustment key ④

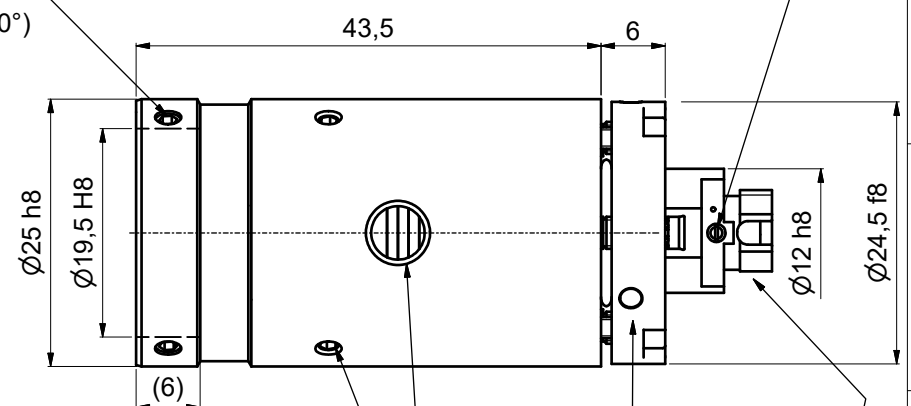
Tension sciew M2 max.torque 40Ncm

clamp screws for locking optics position (2x120°)  
using hex-key size 1.5mm  
50HD-15 ①

adjustment of focus setting  
using eccentric-key 55EX-5 ③

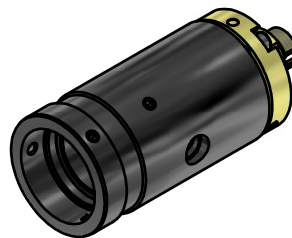
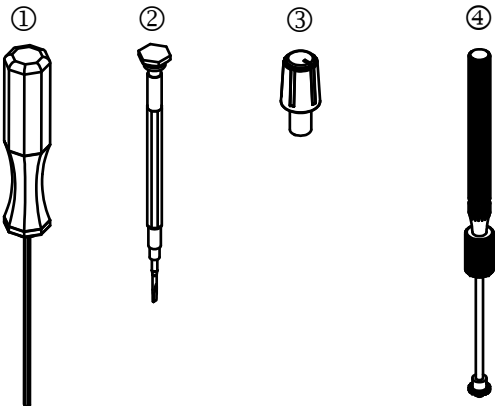
Stop screw (2x120°) for lock/unlock  
of the rotation of the  
quarter wave plate  
with screw driver 1.2mm 9D-12 ②

! Don't touch any other screws !



Tools for assembly and adjustment

- hex-key size 1.5mm 50HD-15 ①
- screw driver size 1.2mm 9D-12 ②
- eccentric-key 55EX-5 ③
- Adjustment key 60Z-2803 ④



Allgemeintoleranz ISO 2768 - f		Maßstab: 2:1	
60FC-Q-0-M30-24/26/37		60FC-Q-0-M35-xx	
60FC-Q-0-M40-xx		Fiber collimator f30-40mm	
Fiber receptacle type FC-Q-0-xx		9803-1223-7300	
Schäfter&Kirchhoff OPTO-SENSORIK UND MESSTECHNIK		Blatt A3	
OPTIK-ENTWICKLUNG/ELEKTRONIK/SENSORTECHNIK/OPTIKFIBRE		Blatt 2	
Zust.	Änderungen	Datum	Name
		Datei: 980312237300.idw	Model: 980312237300.iam